



TORNADO INDUSTRIES, LLC  
3101 WICHITA COURT  
FORT WORTH, TX 76140  
PHONE 800-VACUUMS  
FAX 817-551-0719  
WWW.TORNADOVAC.COM

Parts Manual  
For Commercial Use Only



**BR 13/1 MW LOW MOISTURE FLOOR SCRUBBER  
MODEL NO: 99410**



## Long -Term Buyer Protection Limited Warranty

Tornado Industries, LLC. warrants to the end user/ customer that the Tornado product(s) will be free from defects in material and workmanship for the duration(s) described below. This limited warranty DOES NOT cover machines and/or components subject to normal wear and tear, damage that occurs in shipping, failures resulting from modification, accident, unsuitable operating environment, misuse, abuse, **neglect, or improper maintenance**. For full details, contact your Authorized Tornado Distributor, Service Center, or the Tornado Technical Service Department. Tornado sales and service representatives are not authorized to waive or alter the terms of this warranty, or to increase the obligations of Tornado under the warranty.

**10 Years\***

**Plastic water tanks and Rotationally-molded bodies**

**2 Years\***

**Parts on all Tornado cleaning equipment**

**1 Year\***

**Labor on all Tornado cleaning equipment**

**1 Year\***

**Warranty on batteries, one year prorated**

All battery warranties are handled directly by the battery manufacturer, on a one year prorated basis

### Terms subject to change without notice

1. All Windshear™ Blowers, Storm, TV2SS, Side and Dowlndraft, Insulation Blowers, CV 30, CV 38, CK14/1 PRO, CK 14/2 PRO, SWM 31/9, CK LW13/1, CK LW 13/1 ROAM, CV 38/48 Dual, PV6, PV10, PV6 ROAM, Wall Mount Vacuum and all chargers are warranted for 1 (one) year for both parts and labor.
2. All non-wear item parts purchased after warranty expiration are warranted for 90 days.
3. Warranty starts from either: The date of sale to the consumer, or 6 months after the dealer purchased the unit from Tornado (at Tornado's discretion), whichever comes first.
4. The EB 30 is warranted for a period of 90 days for both parts and labor.
5. Propane-powered equipment engines are limited to the engine manufacturer's warranty.
6. Ride-on Scrubbers are warranted for 24 months parts, and 6 months labor, or 1,000 hours, whichever occurs first.

**Note:** Tornado, The Latest Dirt, Floorkeeper, Carpet-keeper, Carpetrinser, Carpetrinser/Dryer, Headmaster, Taskforce, PAC-VAC, T-Lite, Glazer, Windshear, Max-Vac and Trot-Mop are trademarks of Tornado Industries

**Website:** [www.tornadovac.com](http://www.tornadovac.com)

Phone 1-800-VACUUMS

Fax 817-551-0719

Address 3101 Wichita Court

Fort Worth, TX 76140

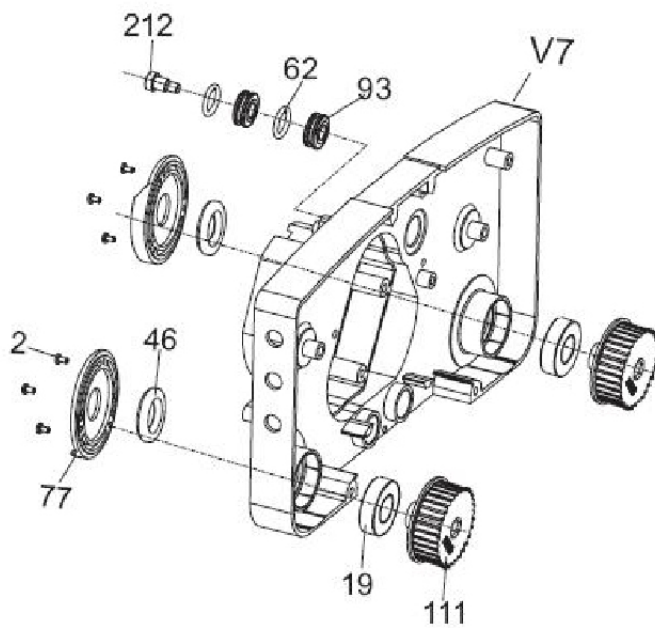
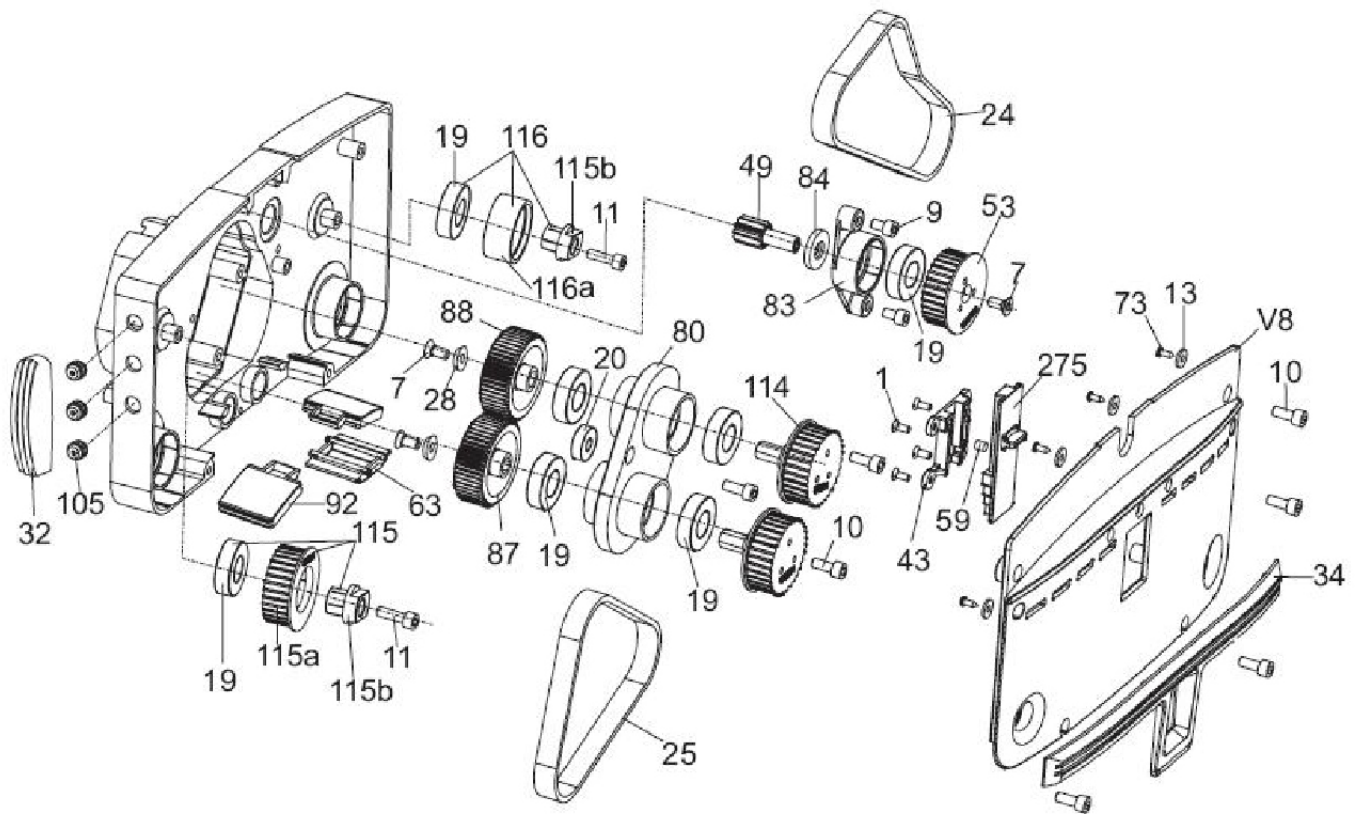
1-800-VACUUMS

Over 90 Years of Cleaning Innovation

A Tacony Company

## Table of Contents

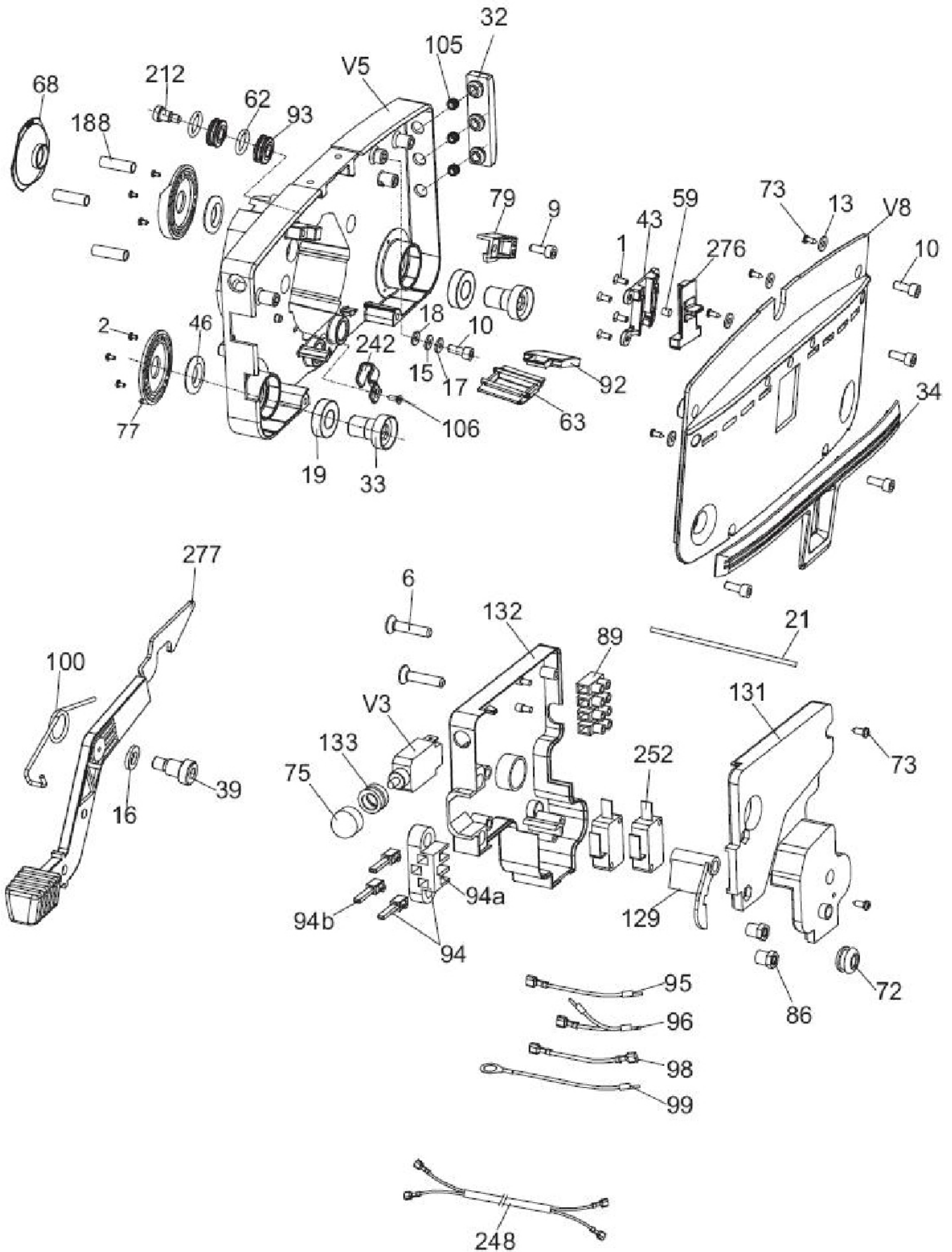
Housing Assembly - Drive Side	4
Housing Assembly - Idle Side	6
Pump Housing Assembly	8
Lever and Guide Link Mechanism	10
Handle Assembly	12
Motor, Drum and Bridge Assembly	14
Accessories	16



Return to TOC

No.	Part No.	Qty	Description
1	90-0258-0000	4	Screw M4 x 10
2	90-0001-0000	6	Screw M3x6
7	90-0143-0000	3	Screw M6 x 14
9	90-0293-0000	2	Screw M6 x 10
10	90-0144-0000	7	Screw M6 x 16
11	90-0005-0000	2	Screw M6 x 20
13	90-0007-0000	4	Washer
19	90-0009-0000	9	Bearing 6003 2RS
20	90-0121-0000	1	Bearing
24	90-0011-0000	1	Belt
25	90-0012-0000	1	Belt
28	90-0152-0000	2	Washer
32	90-0154-0000	1	Bumper
34	90-0156-0000	1	Bumper
43	90-0025-0000	1	Slider Housing
46	90-0027-0000	2	Seal
49	90-0029-0000	1	Pinion
53	90-0031-0000	1	Drum Sproket
59	90-0035-0000	1	Pin
62	90-0176-0000	2	O-Ring
63	90-0040-0000	1	Shield
73	90-0183-0000	4	Self Tapping Screw
77	90-0020-0000	2	Cap
80	90-0285-0000	1	Gear Housing
83	90-0268-0000	1	Housing Sproket
84	90-0264-0000	1	Seal
87	90-0286-0000	1	Gear-LH
88	90-0287-0000	1	Gear-RH (Use P/N 925530A Complete Gear Set)
92	90-0267-0000	2	Shield
93	90-0294-0000	2	Roller
105	90-0390-0000	3	Bumper Sleeve
111	90-0061-0000	2	Brush Sproket
114	90-0063-0000	2	Gear Sproket
115	90-0065-0000	1	Idler Assembly
115a	90-0169-0000	1	Sproket
115b	90-0161-0000	2	Hub
116	90-0197-0000	1	Idler Assembly
116a	90-0166-0000	1	Sleeve
212	90-0392-0000	1	Stub Axle
275	33861	1	Brush Slider (Yellow)
V7	33862	1	Black Drive Housing
V8	33863	1	Black Cover

Return to TOC

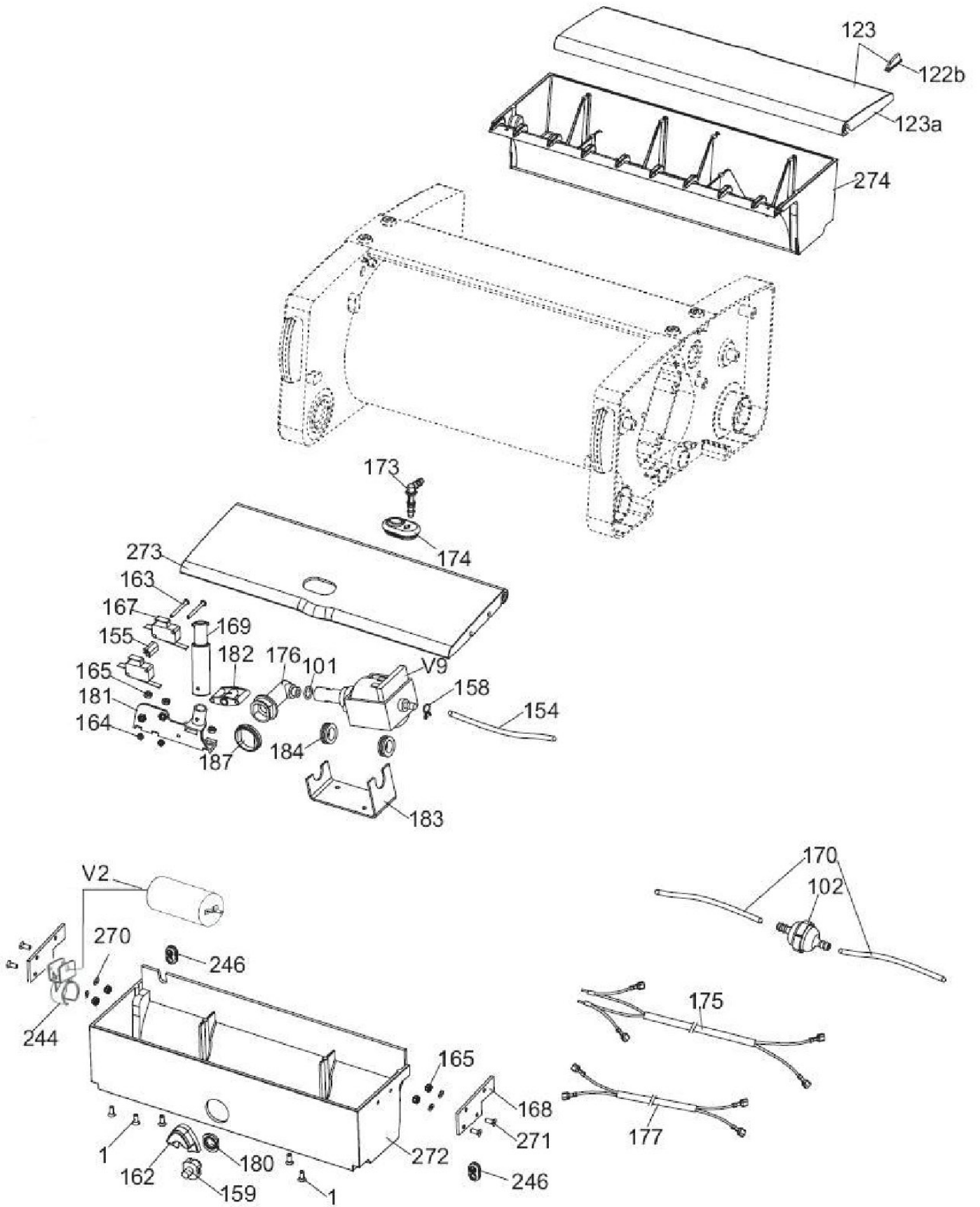


Return to TOC

No.	Part No.	Qty	Description
1	90-0258-0000	4	Screw M4 x 10
2	90-0001-0000	6	Screw M3x6
6	90-0261-0000	2	Screw M5 x 25
9	90-0293-0000	1	Screw M6 x 10
10	90-0144-0000	6	Screw M6 x 16
13	90-0007-0000	4	Washer
15	90-0147-0000	1	Washer
16	90-0395-0000	1	Washer
17	90-0298-0000	1	Spring Washer
18	90-0148-0000	1	Toothed Washer
19	90-0009-0000	2	Bearing 6003 2RS
21	90-0149-0000	3	Wire Tie
32	90-0154-0000	1	Bumper
33	90-0155-0000	2	Bushing
34	90-0156-0000	1	Bumper
39	90-0123-0000	1	Stub Axle
43	90-0025-0000	1	Slider Housing
46	90-0027-0000	2	Seal
59	90-0035-0000	1	Pin
62	90-0176-0000	2	O-Ring
63	90-0040-0000	1	Shield
68	90-0179-0000	1	Fan Cover
72	90-0045-0000	2	Gromet
73	90-0183-0000	6	Self Tapping Screw
75	90-0048-0000	1	Cap
77	90-0020-0000	2	Cap
79	90-0188-0000	1	Stopper
86	90-0297-0000	2	Nut
89	90-0297-0000	1	Nut
92	90-0267-0000	1	Shield
93	90-0294-0000	2	Roller
94	90-0290-0000	1	Socket Assembly
94a	90-0291-0000	1	Socket
94b	90-0292-0000	3	Terminal
95	90-0278-0000	1	Cable
96	90-0279-0000	1	Cable
98	90-0281-0000	1	Cable
99	90-0282-0000	1	Cable
100	90-0260-0000	1	Pedal Spring
105	90-0390-0000	3	Bumper Sleeve
106	90-0396-0000	1	Screw M4 x 8
129	90-0265-0000	1	Switch Lever
131	90-0262-0000	1	Top Insulation
132	90-0263-0000	1	Bottom Insulation
133	90-0295-0000	1	Nut
188	90-0397-0000	3	Tie Rod Sleeve
212	90-0392-0000	1	Stub Axle
242	33864	1	Wire Clamp
248	33865	1	Cable Assembly
252	33866	2	Switch 21A
276	33867	1	Yellow Transport Slider
277	33868	1	Pedal Assembly
V3	90-0056-0000	1	Circuit Breaker 10A
V5	33870	1	Housing
V8	33871	1	Cover

Return to TOC



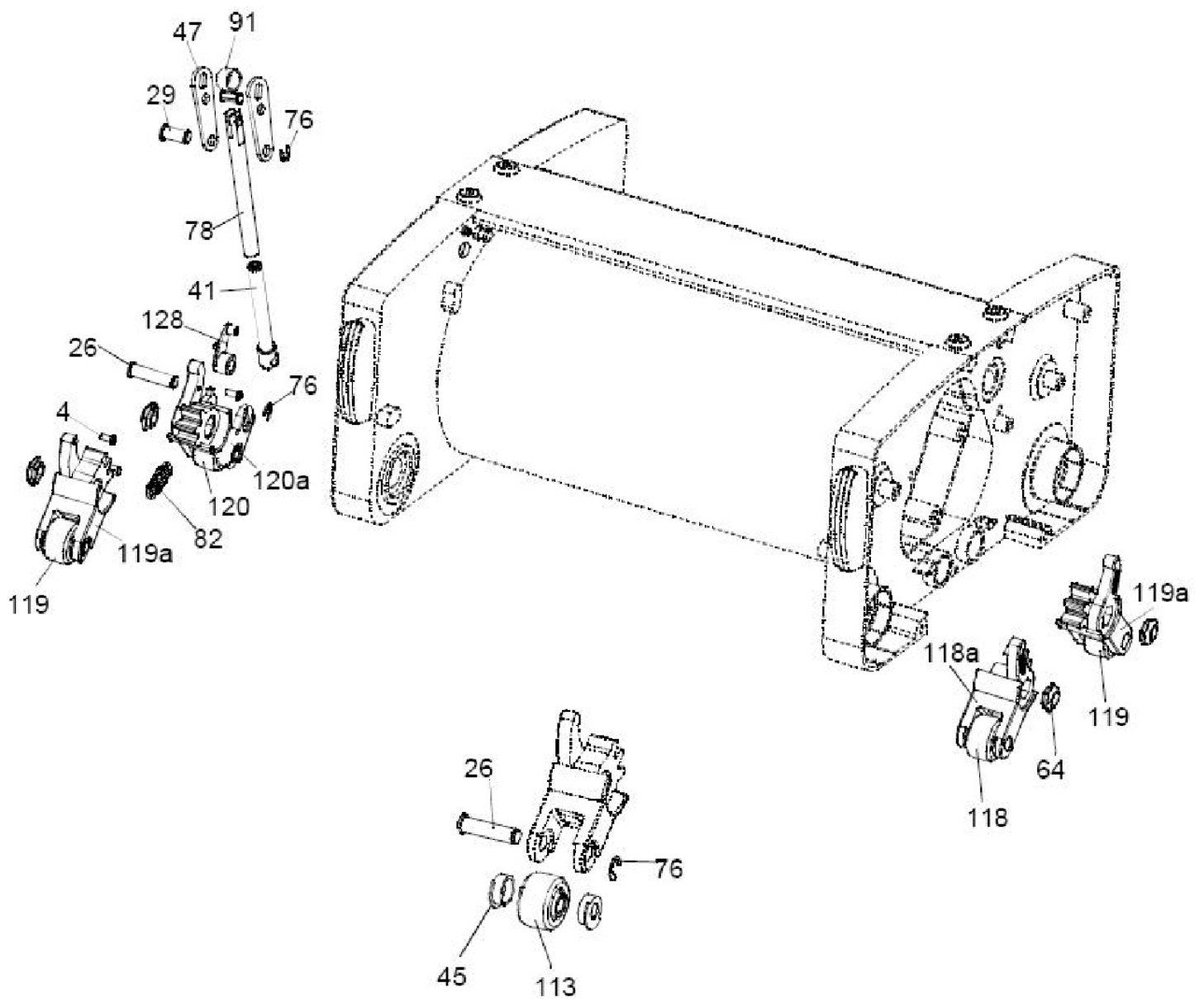


Return to TOC



No.	Part No.	Qty	Description
1	90-0258-0000	5	Screw M4 x 10
101	90-0100-0000	1	O-Ring
102	90-0113-0000	1	Filter Assembly
122b	90-0055-0000	2	Pad
123	90-0075-0000	1	Dirty Water Tank Lid Assembly
123a	90-0184-0000	1	Dirty Water Tank Lid
154	90-0104-0000	1	Hose
155	90-0227-0000	1	Insulation
158	90-0353-0000	1	Hose Clip
159	90-0107-0000	1	Nozzle
162	90-0112-0000	1	Boot
163	90-0138-0000	2	Screw M3 x 30
164	90-0140-0000	2	Nut
165	90-0141-0000	3	Nut
167	90-0057-0000	2	Switch
168	90-0349-0000	2	Lid Strip
169	90-0350-0000	1	Extension
170	90-0403-0000	2	Hose
173	90-0404-0000	1	Hose Connector
174	90-0405-0000	1	Lid Boot
175	90-0343-0000	1	Cable
176	90-0094-0000	1	Adaptor Nozzle
177	90-0344-0000	1	Cable
180	90-0093-0000	1	Nozzle Seal
181	90-0209-0000	1	Switch Base
182	90-0212-0000	1	Lever
183	90-0213-0000	1	Clamp
184	90-0214-0000	2	Support Ring
187	90-0099-0000	1	Spacer
244	33872	1	Capacitor Clamp
246	33873	2	Gromet
270	33874	4	Washer
271	33875	4	Screw M4 x 15
272	33876	1	Yellow Pump Housing
273	33877	1	Yellow Pump Housing Lid
274	33878	1	Dirty Water Tank
V2	33879	1	Capacitor-63.5MFD
V9	33880	1	Pump 120V/60Hz

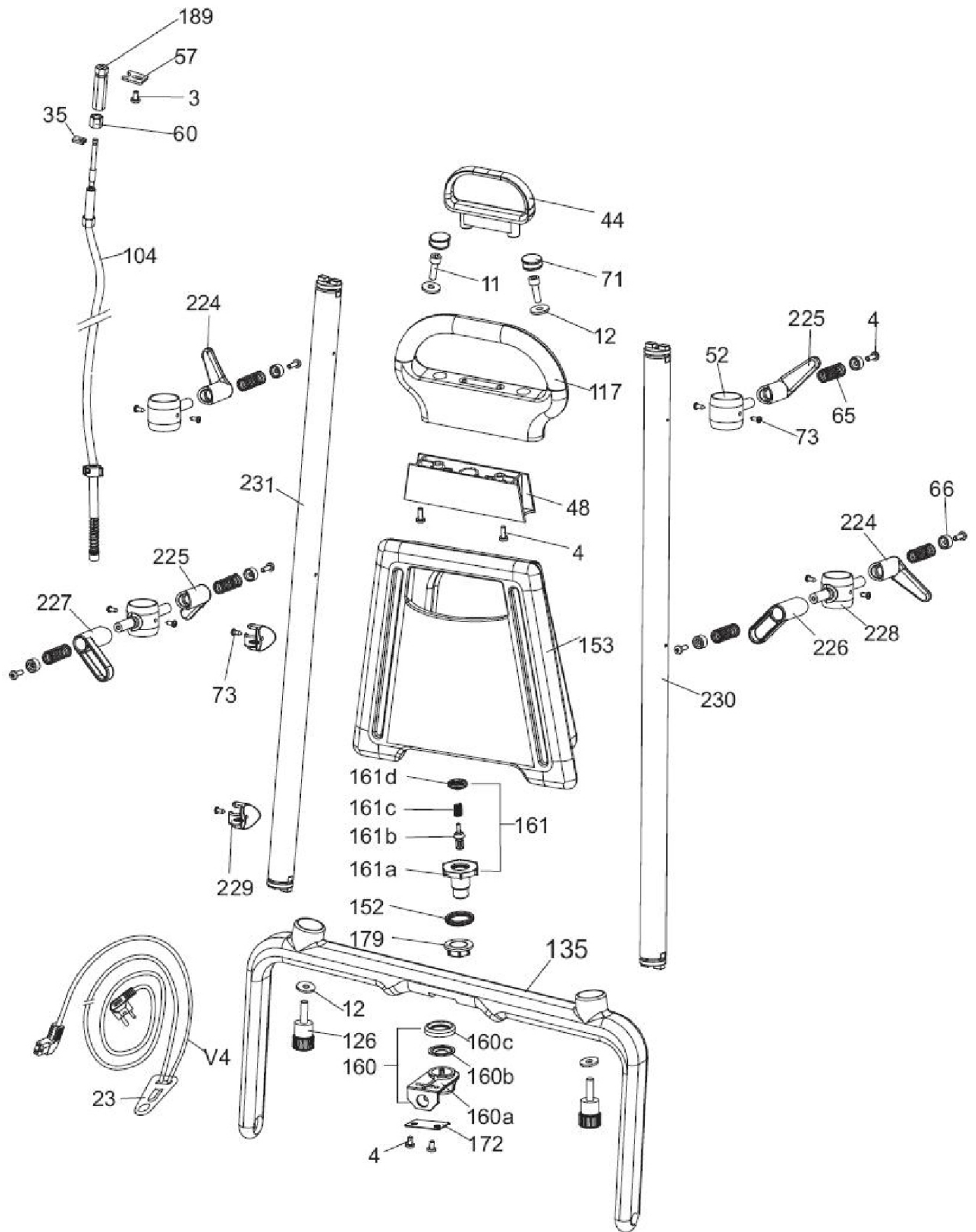
Return to TOC



Return to TOC

No.	Part No.	Qty	Description
4	90-0046-0000	2	Screw M4 x 12
26	90-0151-0000	5	Clevis Pin
29	90-0153-0000	1	Clevis Pin
41	90-0159-0000	1	Link
45	90-0162-0000	8	Shield
47	90-0163-0000	2	Lever
64	90-0177-0000	4	Lever Button
76	90-0051-0000	6	Circlip
78	90-0186-0000	1	Guide Link
82	90-0284-0000	1	Spring
91	90-0257-0000	1	Bushing
113	90-0196-0000	4	Wheel
118	90-0068-0000	1	Lever Assembly
118a	90-0173-0000	1	Lever
119	90-0069-0000	2	Lever Assembly
119a	90-0174-0000	2	Lever
120	90-0070-0000	1	Lever Assembly
120a	90-0175-0000	1	Lever
128	90-0266-0000	1	Lever Switch

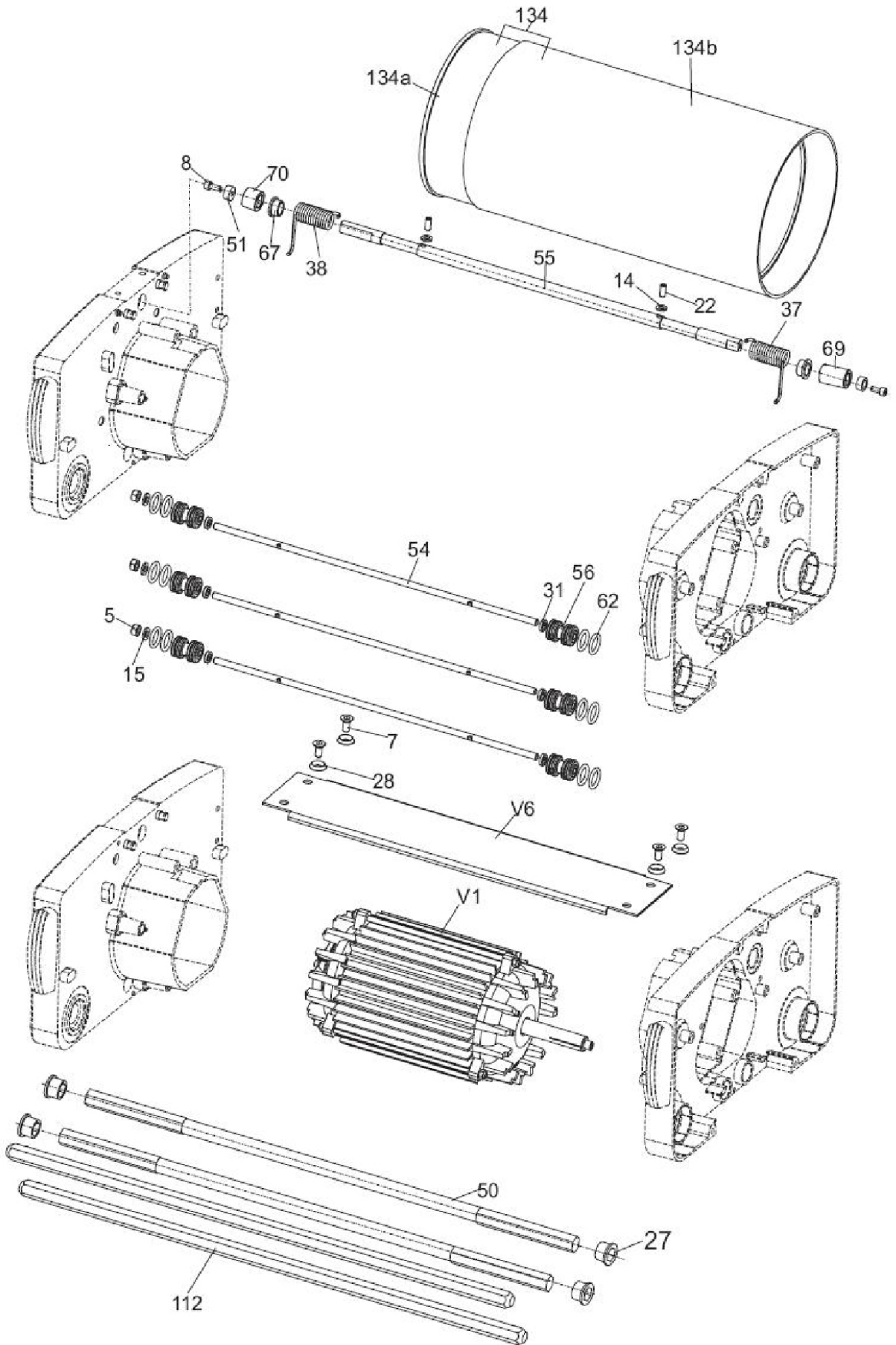
[Return to TOC](#)



Return to TOC

No.	Part No.	Qty	Description
3	90-0002-0000	1	Screw M4 x 8
4	90-0046-0000	10	Screw M4 x 12
11	90-0005-0000	2	Screw M6 x 20
12	90-0006-0000	4	Washer
23	90-0010-0000	1	Cable Restraint
35	90-0018-0000	1	Clamp
44	90-0026-0000	1	Pull Handle
48	90-0165-0000	1	Cap
52	90-0168-0000	2	Cable Holder Base
57	90-0032-0000	1	Clamp
60	90-0038-0000	1	Nut
65	90-0041-0000	6	Spring
66	90-0042-0000	6	Washer
71	90-0044-0000	2	Plug
73	90-0183-0000	10	Self Tapping Screw
104	90-0347-0000	1	Pull Cable
117	90-0067-0000	1	Top Handle
126	90-0296-0000	2	Knob
135	90-0235-0000	1	Bottom Handle
152	90-0101-0000	1	Gasket
153	90-0103-0000	1	Tank
160	90-0110-0000	1	Base Valve Assembly
160a	90-0202-0000	1	Base Use 90-0110-0000
160b	90-0206-0000	1	Seal Use 90-0110-0000
160c	90-0210-0000	1	Valve Cap Use 90-0110-0000
161	90-0111-0000	1	Valve Complete (161a-161d)
161a	90-0203-0000	1	Valve Body
161b	90-0341-0000	1	Seal
161c	90-0229-0000	1	Spring
161d	90-0204-0000	1	Spring Cap
172	90-0412-0000	1	Plate
179	90-0092-0000	1	Nut
189	33881	1	Sleeve
224	90-0402-0000	2	Cable Holder Knob II
225	90-0429-0000	2	Cable Holder Knob I
226	90-0443-0000	1	Tank Holdedre Knob-LH
227	90-0444-0000	1	Tank Holder Knob-RH
228	90-0445-0000	2	Cable and Tank Holder Base
229	33882	2	Guide
230	90-0451-0000	1	Pipe-LH
231	90-0452-0000	1	Pipe-RH
V4	33883	1	Yellow Power Cord 40'

Return to TOC

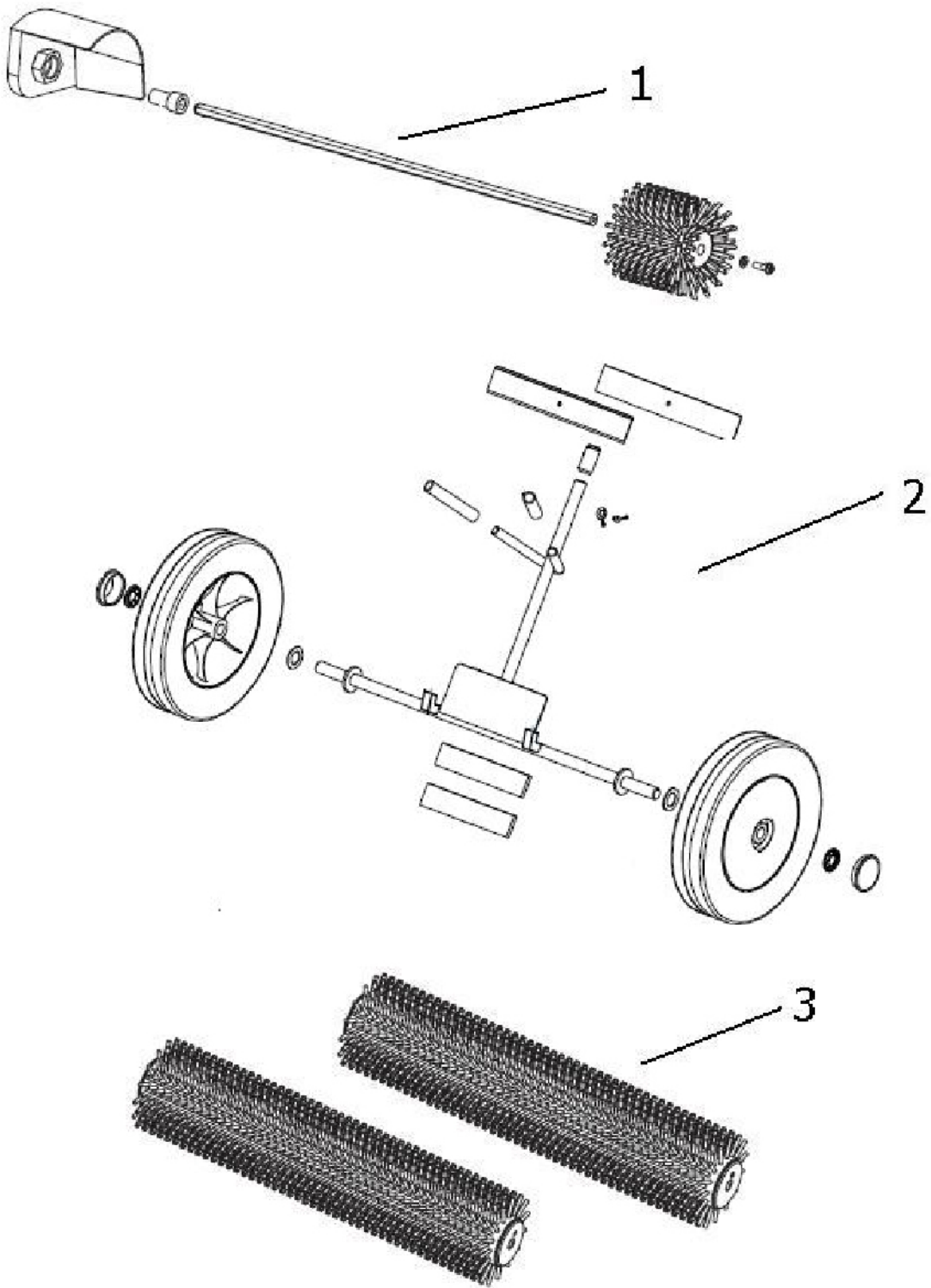


Return to TOC



No.	Part No.	Qty	Description
5	90-0142-0000	3	Nut
7	90-0143-0000	4	Screw M6 x 14
8	90-0004-0000	2	Screw M4 x 10
14	90-0146-0000	2	Washer
15	90-0147-0000	3	Washer
22	90-0150-0000	2	Screw 5 x 12
27	90-0015-0000	4	Bushing
28	90-0152-0000	4	Washer
31	90-0017-0000	6	Washer
38	90-0157-0000	1	Spring
50	90-0167-0000	2	Hex Shaft
51	90-0030-0000	2	Washer
54	90-0170-0000	3	Tie Rod
55	90-0171-0000	1	Shaft
56	90-0172-0000	6	Roller
62	90-0176-0000	12	O-Ring
67	90-0178-0000	2	Bushing
69	90-0180-0000	1	Bushing
70	90-0181-0000	1	Bushing
112	90-0062-0000	2	Brush Shaft
134	90-0306-0000	1	Drum Assembly
134a	90-0306-0000	1	Drum
134b	90-0304-0000	1	Drum Sleeve
V1	90-0193-0000	1	Motor (110V/60Hz)
V6	33885	1	Black Bridge Assembly

Return to TOC



[Return to TOC](#)

No.	Part No.	Qty	Description
1	33858	1	Black Side Brush
2	05-3395-0500	1	Trolley
3	33855	1	Black Standard Brush
	33856	AR	Grey Soft Brush
	33857	AR	Blue Hard Brush
	33859	AR	Blue Escalator Brush
	33926	AR	Orange Carpet Brush

[Return to TOC](#)